

2025 EMPLOYMENT LAW PROGRAMS FOR CALIFORNIA DENTAL PRACTICES

Scott & Whitehead

2601 Main Street, Suite 510 - Irvine, California 92614
<http://employerlaw.com>



MICHAEL J. ROSSITER
949-222-0166, Ext. 113

Michael is a partner with the law firm of Scott & Whitehead. He has been practicing employment law for 15 years and devotes his practice to the representation of employers. He handles legal disputes in a variety of areas, such as wage and hour violations, wrongful termination, discrimination, harassment, and retaliation.



JESSICA A. CRABBE
949-222-0166, Ext. 104

Jessica is a partner at the law firm of Scott & Whitehead, where she serves as a consultant, litigator, and trial attorney. For over 15 years, she has specialized in employer defense, addressing complex legal issues such as wage and hour litigation, class actions, PAGA, and various employment claims, including discrimination, sexual harassment, retaliation, and wrongful termination.

Reserve **YOUR SPOT** Today
for this **Crucial Webinar!**

Text to 310-270-6347 OR
Email to Cal.Dental.Cpa@Gmail.com



PART 3

Thursday, March 13, 2025
6:00-8:00 pm

Employment Law 103: Leaves of Absence and Other Hot Topics

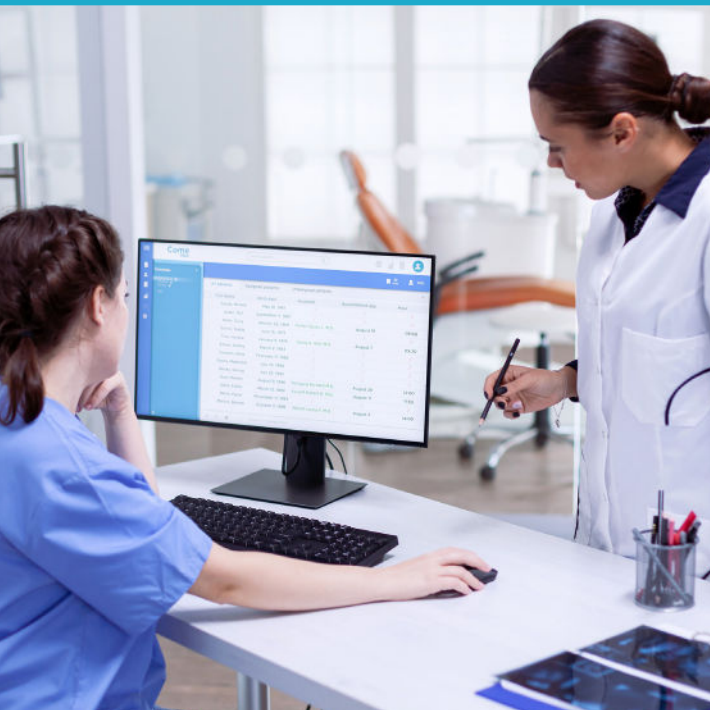
Leaves of Absence for Dental/Medical Practices
Which Leaves are/are not required

The Interactive Process, Reasonable
Accommodation & Undue Hardship

**The Triple Threat: Discrimination +
Harassment + Retaliation = Wrongful Termination**
At-will Employment vs. Wrongful Termination
& Constructive Discharge

Release Agreements & Severance Pay -
Who, When, Why & How

Unemployment Insurance -
Should you oppose claims?
Why? Why Not? How?



Programs are for Dental Practice Owners only, no staff.

Webinar sponsored and promoted by
Fazel Mostashari, MBT, Dental CPA

Dental Tax, Accounting, Valuation and Due Diligence
DentalCpaCa.com