

## 2025 EMPLOYMENT LAW PROGRAMS FOR CALIFORNIA DENTAL PRACTICES

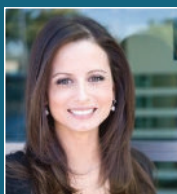
### Scott & Whitehead

2601 Main Street, Suite 510 - Irvine, California 92614  
<http://employerlaw.com>



**MICHAEL J. ROSSITER**  
949-222-0166, Ext. 113

Michael is a partner with the law firm of Scott & Whitehead. He has been practicing employment law for 15 years and devotes his practice to the representation of employers. He handles legal disputes in a variety of areas, such as wage and hour violations, wrongful termination, discrimination, harassment, and retaliation.



**JESSICA A. CRABBE**  
949-222-0166, Ext. 104

Jessica is a partner at the law firm of Scott & Whitehead, where she serves as a consultant, litigator, and trial attorney. For over 15 years, she has specialized in employer defense, addressing complex legal issues such as wage and hour litigation, class actions, PAGA, and various employment claims, including discrimination, sexual harassment, retaliation, and wrongful termination.

Reserve **YOUR SPOT** Today  
for this **Crucial Webinar!**

**Text to 310-270-6347 OR**  
**Email to [Cal.Dental.Cpa@Gmail.com](mailto:Cal.Dental.Cpa@Gmail.com)**



### PART 1

**Thursday, January 23, 2025**  
**6:00-8:00 pm**

### ***Employment Law 101: Documentation, Discipline & Discharge – The Basics***

#### **PRE-EMPLOYMENT**

Hiring strategies, red flags, & how to hire better

#### **ONBOARDING**

Setting up New Hires for success

#### **ACTIVE MANAGEMENT PRINCIPLES**

The *Three Strikes* & how to avoid them

#### **PERFORMANCE REVIEWS**

What is “in,” “out,” & actually beneficial

#### **POST-EMPLOYMENT**

Terminations, attorney letters, claims & related issues



**Programs are for Dental Practice Owners only, no staff.**

**Webinar sponsored and promoted by**  
**Fazel Mostashari, MBT, Dental CPA**

*Dental Tax, Accounting, Valuation and Due Diligence*  
**DentalCpaCa.com**